

# Veranda

RENÉE NANNEMAN



100  
years



Veranda Breeze Quilt designed  
by: **Renée Nanneman**  
Quilt Size: **62½" x 62½"**  
Skill Level: **Confident Beginner**

andover

makower uk

Free Pattern Download Available

1384 Broadway New York, NY 10018  
Tel. (800) 223-5678 • [andoverfabrics.com](http://andoverfabrics.com)

8/15/21

# Veranda Breeze Quilt

Introducing Andover Fabrics new collection: VERANDA by Renée Nanneman

Quilt designed by Renée Nanneman



Quilt finishes 62½" x 62½"

16 Blocks: 10" x 10"

*Luxurious floral prints enhance this wall quilt. What fun mixing and matching the prints to make each star unique. Simple piecing makes this easy enough for anyone with a little quilt making experience.*

## Cutting Directions

**Note:** Read assembly directions before cutting patches. All measurements are cut sizes and include ¼" seam allowances. A fat ¼ is an 18" x 20"-22" cut. Borders and sashes are cut the exact lengths required plus ¼" seam allowances. WOF designates the width of fabric from selvedge to selvedge (approximately 42" wide).

Yardage is generous to allow for switching out prints in the blocks. Note that in some blocks, stars are darker than the background patches. In other blocks, the values are switched. A few blocks have background and star fabrics similar in value to make the block less contrasting. Refer to the Quilt Diagram and photograph for color placement, and feel free to design your own blocks.

### Cutting for one block:

Fabric #1 Star Points

Cut (4) squares 2⅞" (3") for half-square triangle units HST (Read Step 2)

Cut (2) squares 3¼" (3½") for quarter-square units (Read Step 3)

Fabric #2 Star

Cut (1) square 3¼" (3½") for quarter-square units

Fabric #3 Block Center

Cut (1) square 6½"

Fabric #4 Block Background

Cut (4) squares 2⅞" (3") for HST

Cut (1) square 3¼" (3½") for quarter-square units

Cut (4) squares 2½" for block corners

### Fabric A

Cut (40) sashes 3" x 10½"

### Fabric B

Cut (6) strips 5½" x WOF, pieced to make the following:

(4) borders 5½" x 53"

Cut patches for star points as desired

## Fabric Requirements

		Yardage	Red Quilt	Gray Quilt
<b>Fabric A</b>	sash	1 yard	149-CL	149-C
<b>Fabric B</b>	border	1 yard	155-R	155-C
<b>1 Dk. Gray</b>	block ctr.	fat ¼ yard	149-C	149-C
<b>1 Lt. Gray</b>	set	fat ¼ yard	150-C	150-C
<b>1 Red</b>	set	⅜ yard	150-R	150-R
<b>Binding</b>		⅝ yard	153-C	153-R
<b>Backing</b>		4 yards	148-CL	148-C

### EITHER QUILT

<b>3 Rose</b>	block ctr.	⅜ yard each		
		148-C	148-CL	148-N
<b>2 Floral</b>	block ctr.	fat ¼ yard ea.		
		149-N	150-Y	
<b>19 Prints</b>	blocks	fat ¼ yard each		
	151-C	151-E	151-Y	152-N
	152-NL	152-R	153-C	153-R
	153-Y	154-C	154-NY	154-R
	155-E	156-C	156-CL	156-NL
	157-C	157-CL	157-R	

### 1 Dk. Gray

Cut (2) squares 6½" for block centers for either quilt

### 1 Lt. Gray

Cut (2) squares 6½" for block centers for either quilt

Cut (4) squares 5½" for border corners for red quilt

### 1 Red

Cut (25) squares 3" for setting squares for either quilt

Cut (4) squares 5½" for border corners for gray quilt

### 3 Rose From each:

Fussy-cut (2-3) squares 6½" (8 total) for block centers, either quilt (Read Step 1)

### 2 Floral From each:

Cut (2) squares 6½" for block centers, either quilt

### 19 Prints From each:

Cut patches listed above for each block as desired.

### Binding

Cut (7) strips 2½" x WOF for binding

### Backing

Cut (2) panels 36" x 71", pieced to fit quilt top with overlap on all sides

## Making the Quilt

1. Fussy-cut the block centers from the 3 rose prints to center a rose in each square. Fussy-cut other prints as you desire.
2. The Star Blocks are made with half-square triangle units (HST) that finish 2" square. Use your favorite method to make HST, or follow these directions. Select a fabric #4 (background) and a fabric #1 (star point) to use in each block. Cut fabric into 3" squares that will be trimmed after stitching. If you prefer not to trim, cut squares 2<sup>7</sup>/<sub>8</sub>". Draw a diagonal line on the wrong side of the lightest square. Place the marked square on the second fabric square, right sides together (Diagram 1). Sew 1/4" seam on each side of the marked line; cut apart on the marked line. Press open to make pieced HST. Make 8 HST alike for each block. Cut off the "tails" that stick out. Trim to 2<sup>1</sup>/<sub>2</sub>" square if needed.

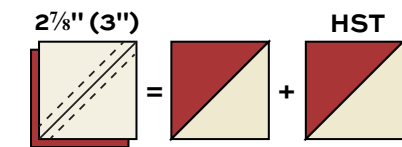


Diagram 1 – Make 8 for each block

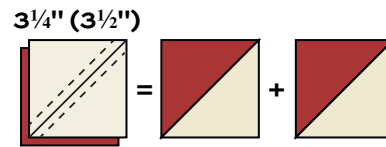


Diagram 2

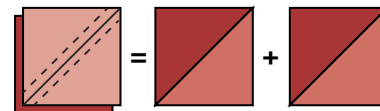


Diagram 3

3. The block also uses 4 quarter-square triangle units at the sides. Select another fabric for the quarter-square triangle units. You need 2 squares of the same star point fabric from Step 2, 1 square of the same background fabric, and 1 square of the second star fabric. These squares are all cut 3<sup>1</sup>/<sub>2</sub>" if you wish to trim the units after stitching, or 3<sup>1</sup>/<sub>4</sub>" if you prefer not to trim. We suggest that you make the units for one block to decide if you want to make slightly larger units for trimming to the exact size later.

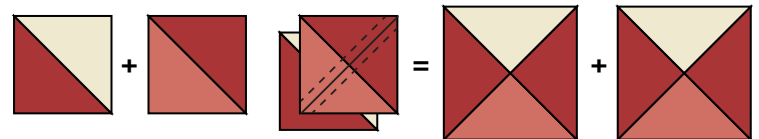
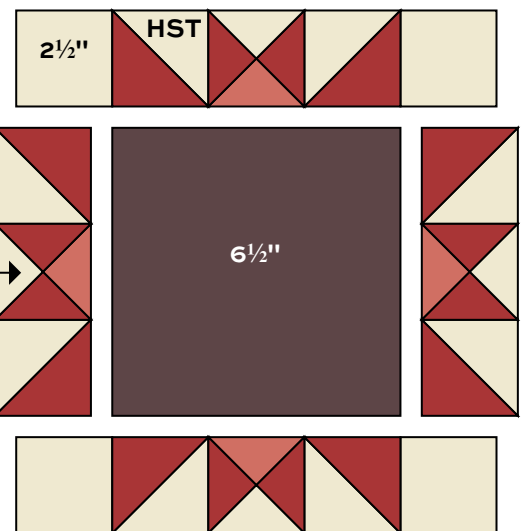


Diagram 4 – Quarter Square Unit  
Make 4 for each block

4. Following directions in Step 2, stitch a star point fabric square together with the background square to make 2 HST (Diagram 2). Likewise, make 2 HST with the star point fabric square and the second star fabric (Diagram 3). Press seam allowances toward the star point fabric in all HST. Trim off the "tails."
5. Draw a diagonal line crossing the seam on the back of one of the HST (Diagram 4). Position the marked square on top of the other square, right sides together. The 2 like fabrics should not be on top of one another, and the seams should nestle together. Pin to keep in place. Stitch 1/4" seam on each side of the marked line. Cut apart on the marked diagonal line. Press the final seam open. This makes 2 quarter-square units. Repeat the step to make 4 units alike for each block. Trim the "tails." Trim the unit to 2<sup>1</sup>/<sub>2</sub>" square if needed.

6. Referring to the Block Diagram, arrange 2 HST and 1 quarter-square unit to make a pieced unit, noting color placement. Repeat to make 4 units alike. Sew to the sides of the center 6<sup>1</sup>/<sub>2</sub>" square. Join 2<sup>1</sup>/<sub>2</sub>" background squares to the ends of remaining pieced units and sew to the top and bottom of the block. Repeat these steps to make a total of 16 blocks, making each one different.



Block – Make 16

7. Referring to the Quilt Diagram, arrange the blocks in 4 rows of 4 blocks each, positioning the sashes between blocks and at the ends of rows. Join the blocks and sashes to make 4 block rows. Join 4 sashes with 5 setting squares to make a sash row. Make 5 sash rows. Join the block and sash rows in the order shown.

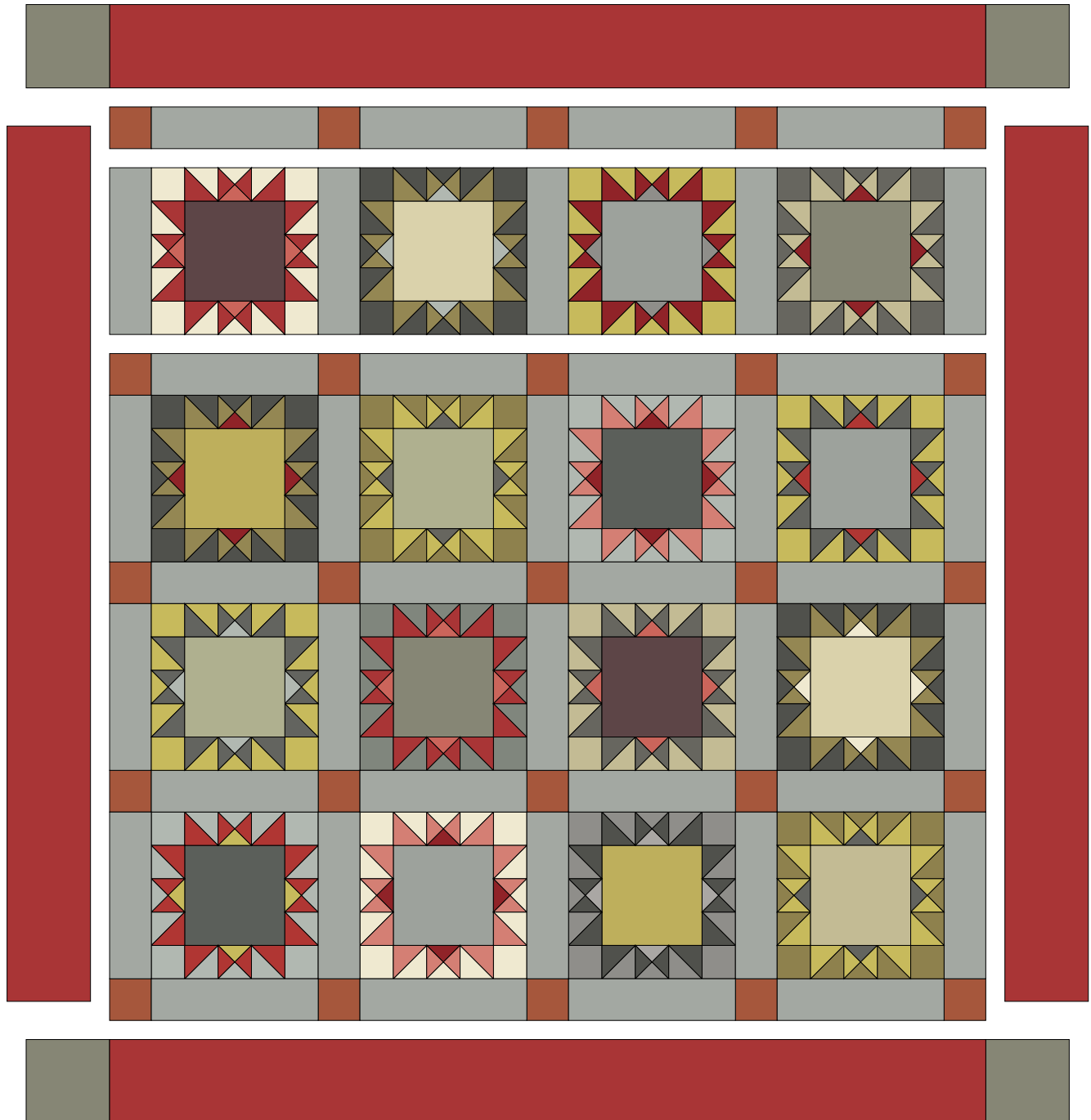
# Veranda Breeze Quilt



8. Sew borders to the sides of the quilt. Join 5½" corner squares to the ends of remaining borders. Sew to the top and bottom of the quilt.

## Finishing the Quilt

9. Layer the quilt with batting and backing and baste. Quilt in the ditch around borders and block patches. Quilt around the printed motifs in the blocks, sashes, and border. Bind to finish the quilt.



Quilt Diagram

# Veranda

RENÉE NANNEMAN



148-C



148-CL



148-N



149-C



149-CL



149-N



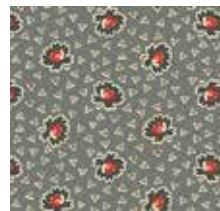
150-C



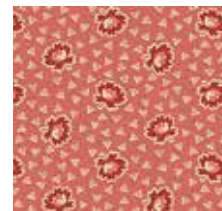
150-R



150-Y



151-C



151-E



151-Y



152-N



152-NL



152-R



153-C



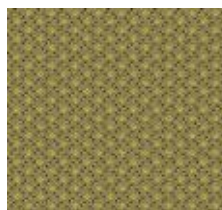
153-R



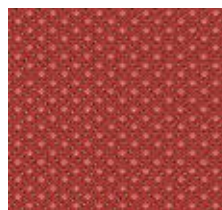
153-Y



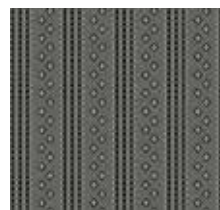
154-C



154-NY



154-R



155-C



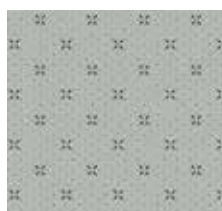
155-E



155-R



156-C



156-CL



156-NL



157-C



157-CL



157-R

All fabrics are used in quilt pattern. Fabrics shown are 25% of actual size.

andover : makower uk

Free Pattern Download Available

1384 Broadway New York, NY 10018  
Tel. (800) 223-5678 • andoverfabrics.com